



The
key for School
Governors

The new Ofsted framework

What's changing
and what governors
can do now

www.thekeysupport.com/gov

New 'quality of education' judgement

This judgement will have the curriculum at its heart. It replaces the 'quality of teaching, learning and assessment' and 'outcomes' judgements from the current framework.

What will inspectors look at?

- › The extent to which your curriculum sets out the knowledge and skills pupils will gain at each stage (**intent**)
- › The way you teach and assess your selected curriculum, to support pupils to build their knowledge and to apply that knowledge as skills (**implementation**)
- › The outcomes pupils achieve as a result of the education they've received (**impact**)

See paragraph 155 of the [draft inspection handbook](#)  for maintained schools and academies.

Ofsted says this judgement will "place more emphasis on the substance of education" and less on performance data.

Separate judgements for 'personal development' and 'behaviour and attitudes'

Behaviour and attitudes

Ofsted's proposing a separate behaviour judgement to give parents reassurance about how well behaviour is managed in your school.

It'll assess:

- › Whether you're creating a calm, well-managed environment free from bullying
- › The impact this has on the behaviour and attitudes of your pupils

See paragraphs 185 to 186 of the draft handbook.

Personal development

The 'personal development' judgement will recognise the work you do to build pupils' resilience and confidence in later life. It'll evaluate:

- › Your school's intent to provide for the personal development of pupils
- › The quality with which you implement this work

See paragraph 200.

Ofsted says separating these judgements will help enhance the inspection focus on each area and enable clearer reporting on both areas.

We've got the 2019 framework covered for you

Members of The Key will have access to [a range of resources on Ofsted](#): 

- ➔ What these changes mean for you and what you can do now
- ➔ A downloadable summary of the framework for governing body meetings
- ➔ Practical advice on your curriculum, how to audit it, and how to fund it
- ➔ Step-by-step guides to improving behaviour
- ➔ Up-to-date resources on preparing for inspection
- ➔ Questions that inspectors may ask governors



Section 8 inspections of 'good' schools to happen over 2 days

By extending on-site time for section 8 inspections of 'good' schools (formerly 'short inspections') to 2 days, Ofsted hopes to make sure inspectors have sufficient opportunity to gather evidence that a school remains 'good' under the new criteria.


A section 8 inspection of a 'good' school will focus on particular aspects of the school's provision, as a subset of the full framework criteria (see paragraphs 270 to 282 of the draft handbook).

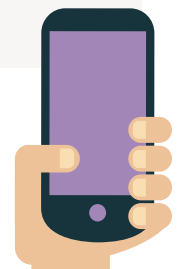
Introduction of 'on-site preparation' the afternoon before the inspection

For all section 5 and section 8 inspections, the plan is for:

- › The lead inspector to arrive at your school no later than 12.30pm on **the day before** the inspection is scheduled to start
- › Ofsted to call your school no later than 10am to formally notify you about the inspection

Ofsted says this'll allow inspectors and school leaders to carry out preparation collaboratively wherever possible.

Members can also [install The Key app](#)  for in-the-moment updates on all things Ofsted and the latest resources from The Key. As soon as we know, our members will know.



Internal performance data no longer used as inspection evidence

Inspectors won't look at non-statutory internal progress and attainment data. This is to help make sure inspection doesn't create unnecessary work for any school staff.



Inspectors **will**:

- › Gather direct evidence of quality of education in your school
- › Have meaningful discussions with you about how you know the curriculum is having an impact
- › Ask you to explain:
 - Why you've decided to collect the assessment information you collect
 - What you're drawing from this information
 - How that informs your curriculum and teaching


What you can do now

It's too early to say *exactly* what inspectors will be asking, but your school leaders, and you as governors, **can** start thinking about your curriculum and behaviour in your school right away.

As a governing board:

- › Add the new Ofsted framework to your spring term agenda for the full board or relevant committee – perhaps curriculum or teaching and learning. Speak to the staff member responsible for the curriculum in advance, or have them attend the meeting
- › Ask the staff member if they have considered:
 - Assessing your curriculum against the features of a high quality curriculum (set out above)
 - Surveying staff to see how confident they feel about curriculum development and design
 - Creating a plan: how is curriculum development work going to be shared out between different members of staff? How long will it take?
 - Discussing your curriculum's intent, implementation and impact with all members of staff now, so everyone is talking about your curriculum consistently by the time an inspection rolls around
- › Download and adapt our [model behaviour policy](#),  and see examples from other schools
- › Make sure you don't miss any new information by subscribing to our [latest updates article](#) 
- › **Watch this space** – we'll be writing more comprehensive, practical information for governors on monitoring the quality of your school's curriculum

Have your say and find out what others think

- ➔ Take part in the consultation via the online survey [here](#).  The consultation is open until April 5th
- ➔ Find out what over 1000 school leaders thought of the proposals in our [exit poll](#) 